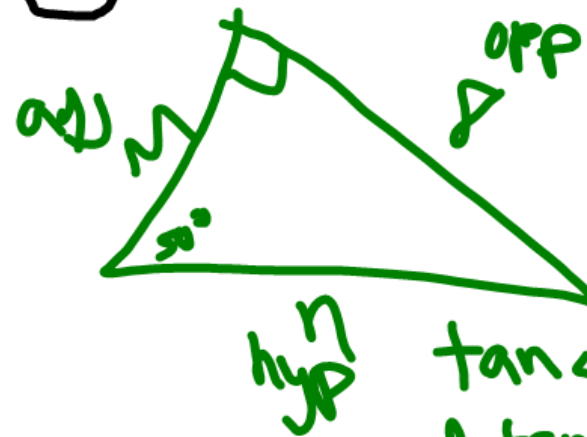


15

$$\sin 43^\circ = \frac{S}{26}$$

$$S = 26 \sin 43$$

$$S = 17.7$$

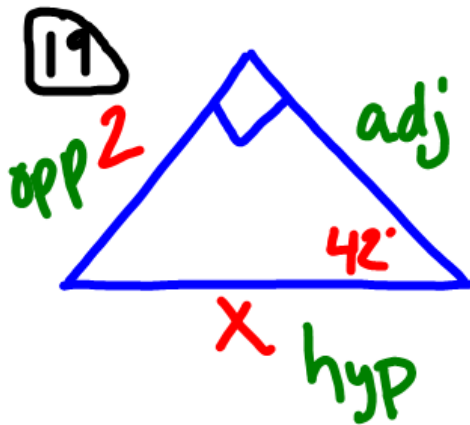


$$\tan 30 = \frac{r}{3}$$

$$M \tan 50 = \frac{r}{3}$$

$$\frac{\tan 30}{\tan 50} = \frac{r}{r}$$

$$M = 6.7$$



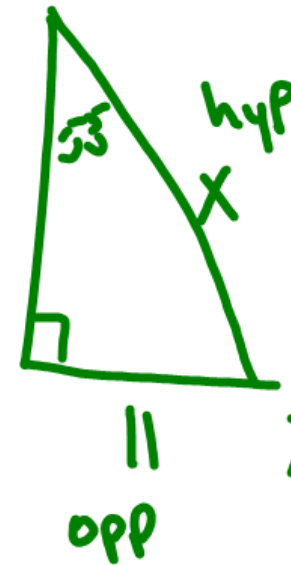
20

$$\frac{\sin 42}{1} = \frac{2}{x}$$

$$\frac{2}{\sin 42} = x$$

$$x = 2.98$$

$$x = 3$$



$$\frac{\sin 53}{1} = \frac{11}{x}$$

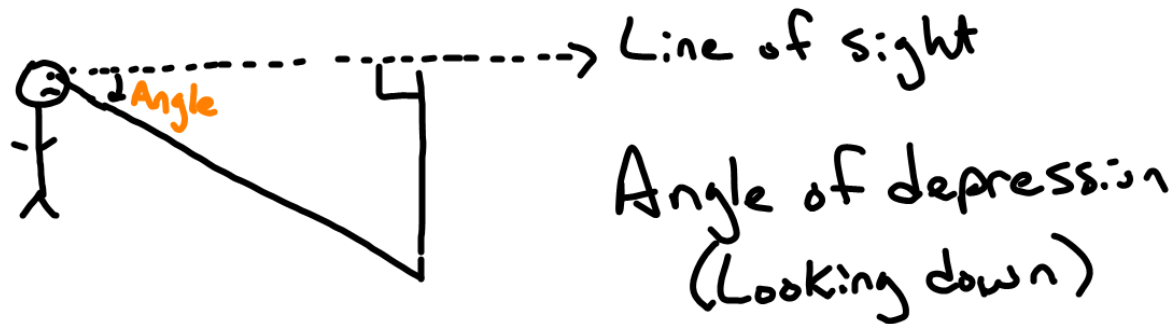
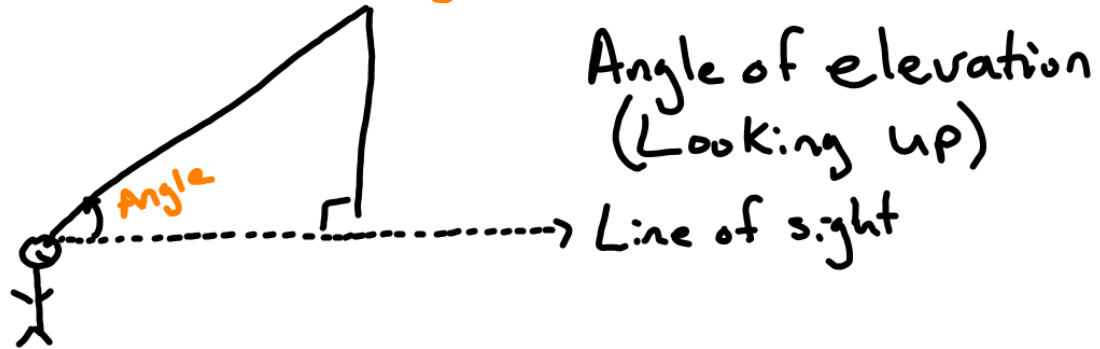
$$x \cdot \sin 53 = 11$$

$$x = \frac{11}{\sin 53}$$

$$x = 13.77$$

Angle of Elevation & Depression

* Line of sight



Draw a Δ with an angle of dep. of 23°

