

Warm-up

1) Write in lowest terms (no decimal)

$$\frac{-10a}{-10} = \frac{32}{-10} \div 2 \quad a = -\frac{16}{5} \text{ or } -3\frac{1}{5}$$

2) Write the equation for the line thru

$$\begin{matrix} x & y \\ (0,0) & ; & (4,8) \\ & x & y \end{matrix}$$

Slope Intercept

~~$$y = mx + b$$~~

$m =$
 $b =$

Point Slope

$$y - y_1 = m(x - x_1)$$

$m = 2$

$(0,0)$ or $(4,8)$

$$m = \frac{8-0}{4-0} = \frac{8}{4} = 2$$

$$y - 0 = 2(x - 0)$$

$$y = 2x$$

$$y - 8 = 2(x - 4)$$

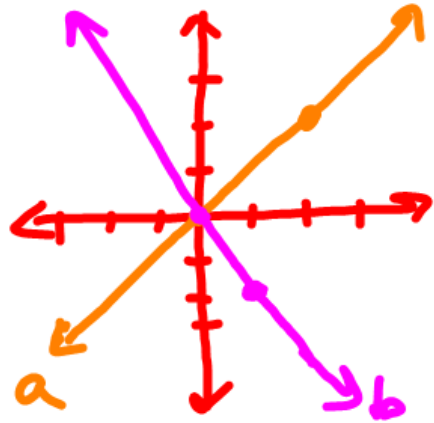
$$y - 8 = 2x - 8$$

$$\begin{matrix} +8 & +8 \end{matrix}$$

$$y = 2x$$

2.5 Direct Variation

* The origin is lines
(as one goes \uparrow , other \uparrow
goes \downarrow , other \downarrow)



eqn of a: $y = 1x + 0$
or
 $y = x$

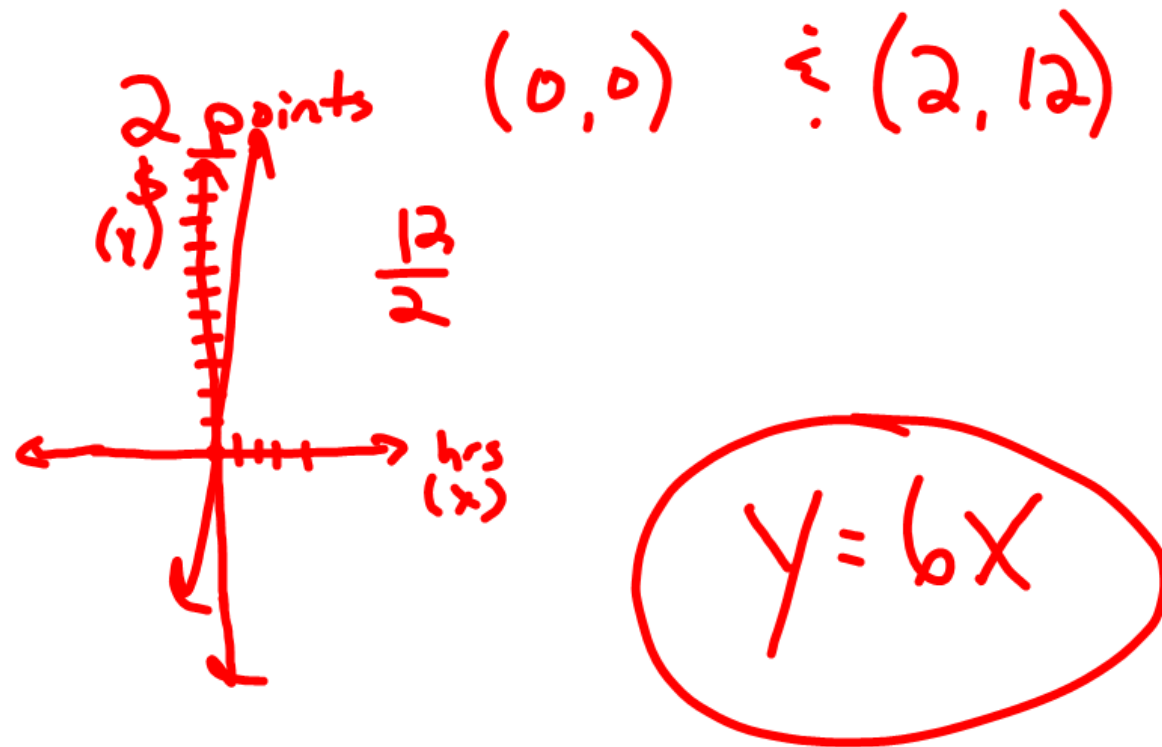
eqn of b: $y = -\frac{2}{1}x + 0$
or
 $y = -2x$

$y = x$ & $y = -2x$
* both missing 'b'
cuz goes thru origin

You earn \$12 for 2 hours of work.

plot as a point & write eqn.

(if work 0 hrs, earn 0 dollars)



* 6 is pay per hour