

1.3b More Solving Equations

24 $5w+2 = 2w+5$

23 $5b-4 = 2b+8$

$w=1$

$b=4$

25 $2z-3 = 6z+25$

29 $2c+14 = 6-4c$

$-7 = z$

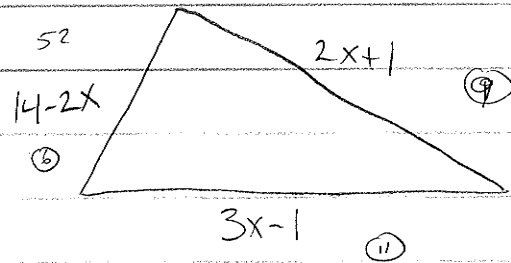
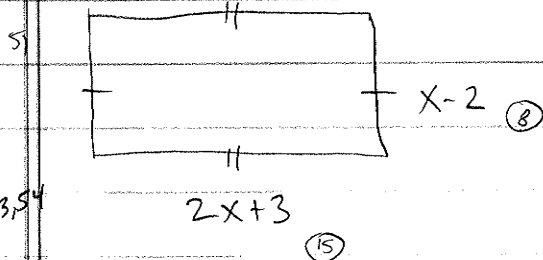
$c = -\frac{8}{6} = -\frac{4}{3} = -1\frac{1}{3}$

27 $2(b+3) = 4b-2$

$b=4$

Perimeter = $4b$

Perimeter = $2b$



Find the length of each side

Find the length of each side

$x=6$

$x=4$

p21: 20-30 even
34-38 e, 53, 54