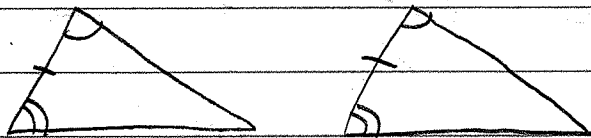


4.5 Prove Δ s Congruent by ASA & AAS

* Angle-Side-Angle, Angle-Angle-Side

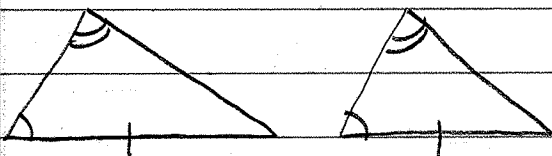
For ASA,



(included)

* If 2 angles & side in between are congruent on 2 Δ s, the triangles are congruent.

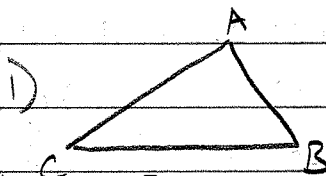
For AAS,



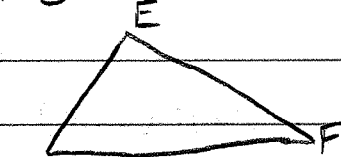
(non-included)

* If 2 angles & side not between are congruent on 2 Δ s, the triangles are congruent.

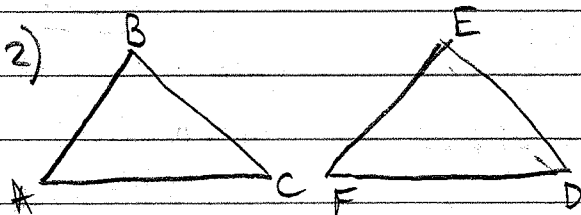
Example - Name the congruence & reason



Given: $\angle CAB \cong \angle DEF$, $\angle ABC \cong \angle EDF$, $\overline{AB} \cong \overline{ED}$



$\Delta ABC \cong \Delta EDF$ by ASA



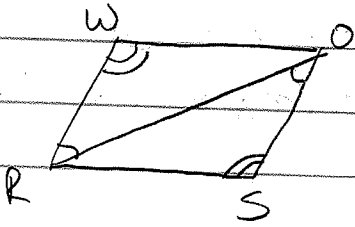
Given: $\angle BCA \cong \angle FED$, $\angle CAB \cong \angle EDF$, $\overline{BC} \cong \overline{FE}$

$\Delta ACB \cong \Delta DFE$ by AAS

P252: 3-5,
7-12,
14-17

MA
36-43

3) Find the congruent Δ 's & give the reason.



$\overline{OR} \cong \overline{OR}$ by Reflexive

$\Delta RWO \cong \Delta OSR$ by AAS