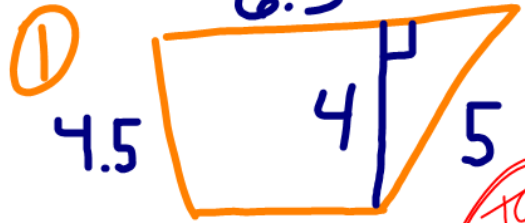


Review

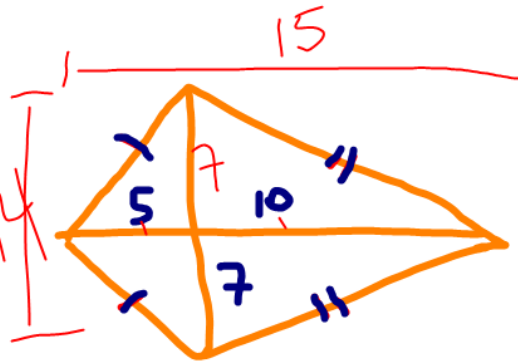
Find area



$$A = \frac{1}{2}h(b_1 + b_2)$$

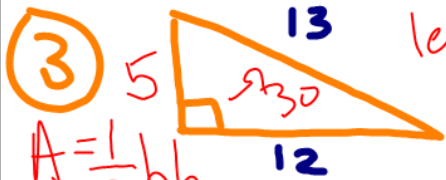
19

2



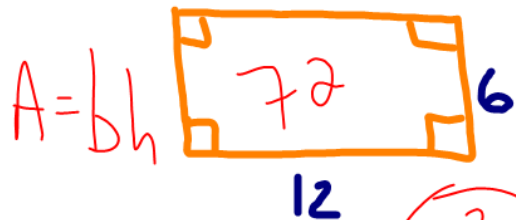
$$A = \frac{1}{2}d_1 \cdot d_2$$

105



$$A = \frac{1}{2}bh$$

plus



$$A = bh$$

102

leg² + leg² = hyp²
 $5^2 + 12^2 = 13^2$
 $25 + 144 = 169$
 $x^2 = 25$
 $x = 5$

4) Ratio of sides is 7:10

a) Find ratio of perimeters

$$\frac{7}{10} \quad 7:10$$

b) Find ratio of areas.

$$\frac{7^2}{10^2} \quad \frac{49}{100} \quad 49:100$$