

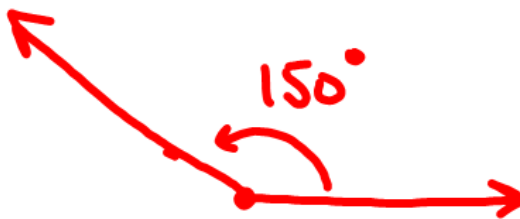
Warm-up

Draw the angle

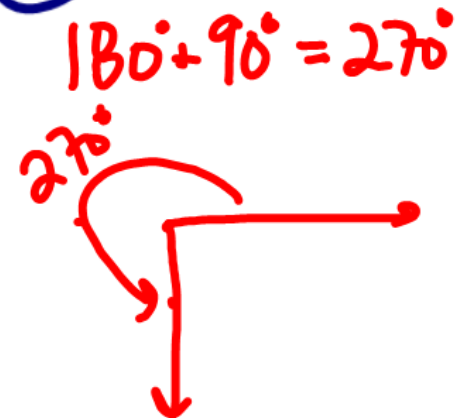
① 20°



② 150°



③ 270°



9.4 Rotations



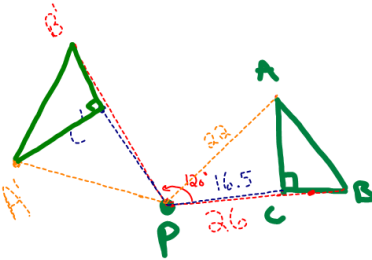
Clockwise
(negative angle)



Counter clockwise
(positive angle)

Rotating Objects

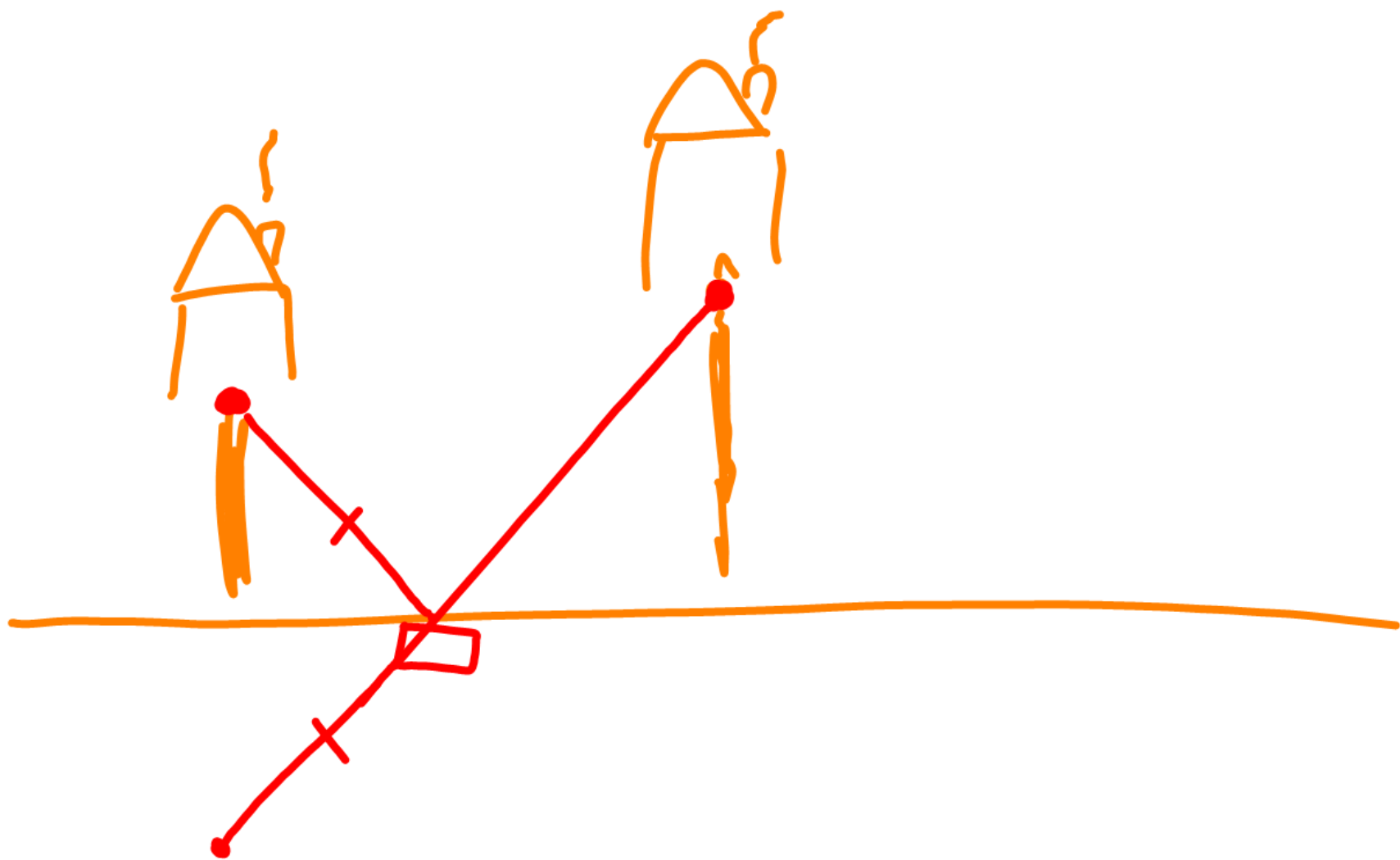
* Draw a 120°
Counter clockwise
rotation about P



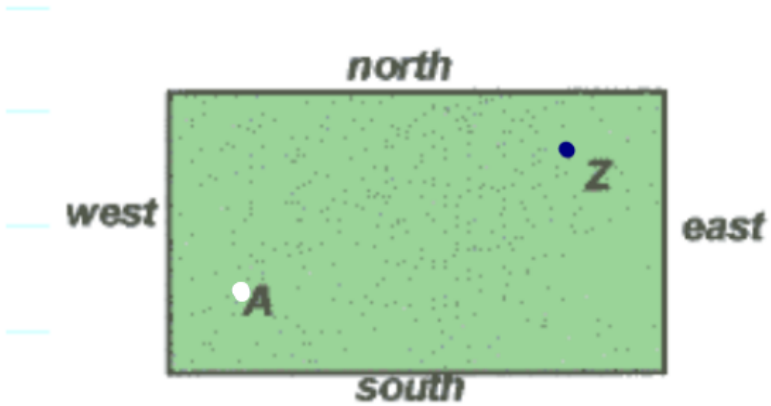
- 1st - draw line from vertex to P (corner)
- 2nd - Measure how far from P
- 3rd - Rotate it

* Measure AP
BP
CP

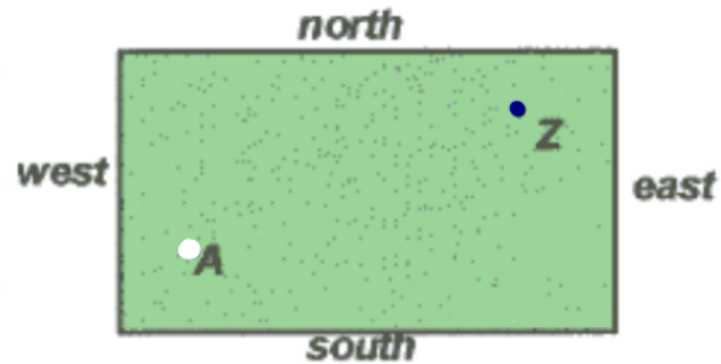
* Rotate 120° & draw



Mini - Golf ... Need to hit the ball (A) into the hole (Z) ; bank it off a wall.

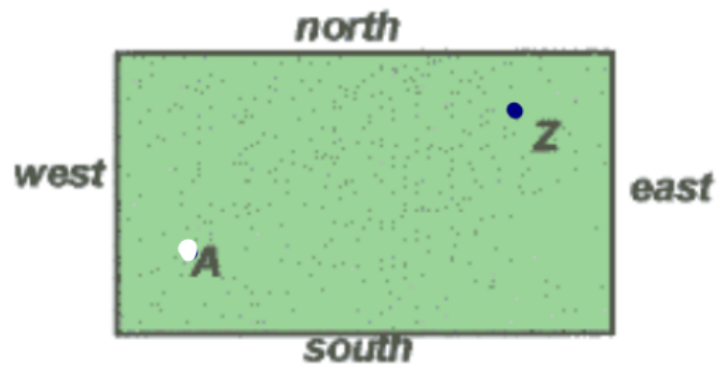


* bank off east wall

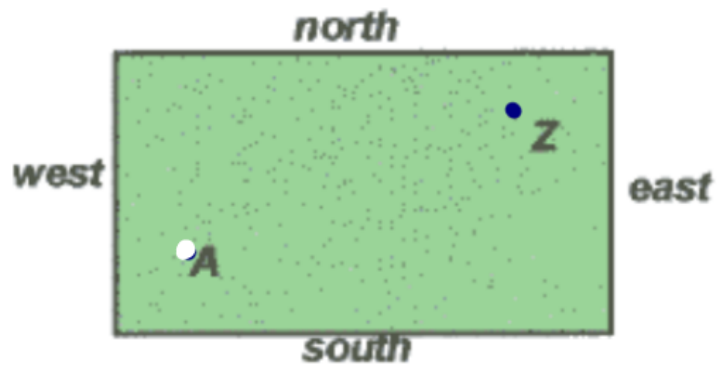


* bank off north wall

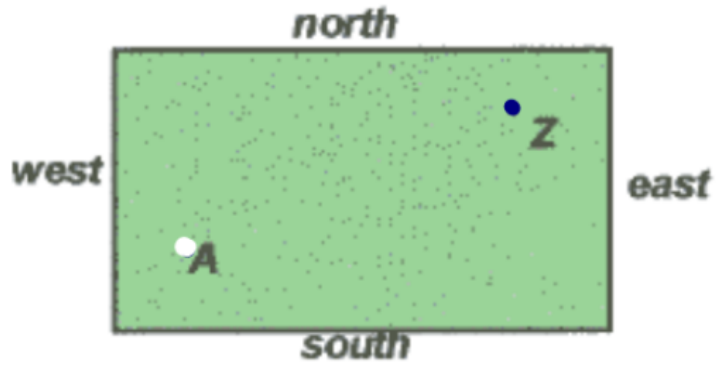
* bank off west wall



* bank off south wall



* bank off South & east



* Any 3 walls

