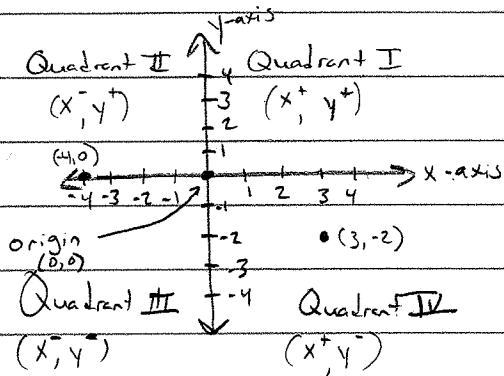


4.1 Plot Points on Graph

(5, 0)

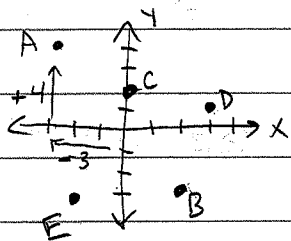
The Coordinate Plane:



Coordinate (x, y)

1) Plot A(-3, 4)

2) Find coordinates for B, C, D, E



B(2, -3), C(0, 2), D(3, 1), E(-2, -3)

3) Which points are in Quad I?, Quad II?, Quad III?, Quad IV?

D A E B

Graphing a function using a table

Graph $y = 2x - 1$ with domain $-2, -1, 0, 1, 2$. I identify the range.

1st - Make a table

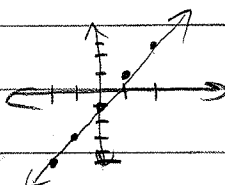
(input)
x

plug in for x

(output)
y

x	y	
-2	-5	$2(-2) - 1$
-1	-3	$2(-1) - 1$
0	-1	$2(0) - 1$
1	1	$2(1) - 1$
2	3	$2(2) - 1$

2nd - Plot points / Connect w/ line



p 209: 1, 3-13,
15, 17, 18,
25, 26, 29-32